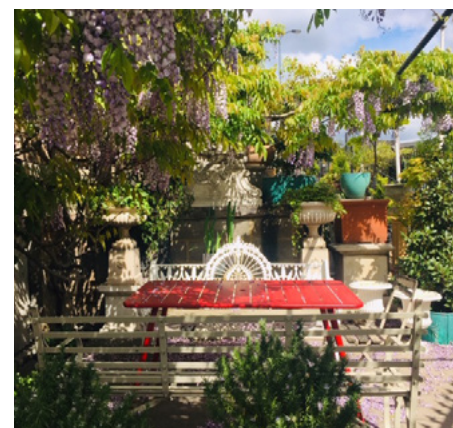




---

PRIVATE DINING • WEDDINGS • EVENTS & RECEPTIONS



# BRUNSWICK HOUSE

STEEPED IN GEORGIAN SPLENDOUR, A RELIC OF OLD LONDON

## BRUNSWICK HOUSE

HIRE EXCLUSIVELY  
OR BY THE FLOOR

THE SALOON

THE SMOKING ROOM

THE PARLOUR/  
THE LIBRARY

THE STUDY

THE CELLAR ROOMS

TESTIMONIALS

# LASSCO



Across the Thames from Belgravia and Tate Britain stands a mansion, a magnificent reminder of eighteenth century Vauxhall and its pleasure gardens. Where once orchestras played and pleasure steamers moored, a fifty storey tower stands – but inside Brunswick House the music can still be heard.

The House, once home to the eponymous Duke is now the LASSCO architectural emporium and the Brunswick House Restaurant.

Guests enter through the grand, Coadestone portico leaving the roar of twentieth century London behind. Inside its lofty Georgian interior the panelled rooms are packed with salvaged curiosities, magnificent chimneypieces, brilliant cut glass entranceways, sparkling chandeliers and noble colonnades.

Reclaimed furniture and vintage paraphernalia jostle with an eclectic display of fascinating antiques in each room. Outside Brunswick House, either on the roof terrace or the patio gardens and displayed in picturesque profusion are old street signs, statuary, fountains, lanterns and lamp posts. Everything is for sale!

Brunswick House can be hired exclusively or by the room or floor. Private dining, standing events and wedding receptions can be hosted. Please contact [events@lassco.co.uk](mailto:events@lassco.co.uk) to be guided through the best option for your event.



# BRUNSWICK HOUSE

STEEPED IN GEORGIAN SPLENDOUR, A RELIC OF OLD LONDON

## BRUNSWICK HOUSE

HIRE EXCLUSIVELY  
OR BY THE FLOOR

THE SALOON

THE SMOKING ROOM

THE PARLOUR/  
THE LIBRARY

THE STUDY

THE CELLAR ROOMS

TESTIMONIALS

LASSCO

## BRUNSWICK HOUSE OFFERINGS

Described by Nick Lander in the Financial Times as “one of the most memorable places to eat in London”. Brunswick House offers the best cuisine in a truly extraordinary setting.

Feasting menus are available to banqueting guests, along with exquisite canapes and standing reception menus. The private rooms can accommodate 12 – 110 seated guests and up to 250 standing guests.

Bespoke menus and packages are available on application, as well as suggested wine offers – corkage charges will apply should you wish to bring examples from your own cellars.

Food and drink minimum spends apply. Please enquire for more details.

*“one of  
the most  
memorable  
places to eat  
in London”*

Nick Lander, Financial Times



# BRUNSWICK HOUSE

STEEPED IN GEORGIAN SPLENDOUR, A RELIC OF OLD LONDON

## BRUNSWICK HOUSE

### HIRE EXCLUSIVELY OR BY THE FLOOR

THE SALOON

THE SMOKING ROOM

THE PARLOUR/  
THE LIBRARY

THE STUDY

THE CELLAR ROOMS

TESTIMONIALS

# LASSCO



## HIRE BRUNSWICK HOUSE EXCLUSIVELY OR BY THE FLOOR

### EXCLUSIVE HIRE

Capacity 250 standing/110 seated • Venue hire fee £5000 plus VAT  
Up to 110 seated guests can dine together across the Saloon/  
Smoking Room.

### FIRST FLOOR AND CELLARS

Capacity 120 standing/70 seated • Venue hire fee £3500 plus VAT  
Up to 70 guests can dine together in the Saloon.

### GROUND FLOOR AND FIRST FLOOR

Capacity 180 standing/110 seated • Venue hire fee £3500 plus VAT

### GROUND FLOOR AND CELLARS

Capacity 180 standing • Venue hire fee £2500 plus VAT

### FIRST FLOOR

Capacity 120 standing/70 seated • Venue hire fee £1400 plus VAT

### CELLARS

Capacity 120 standing • Venue hire fee £1250 plus VAT

### INDIVIDUAL ROOMS

*(Individual hire is available Tuesday – Thursdays)*

**ParLOUR/Library:** Venue hire £450 plus VAT  
(maximum 30 seated guests)

**Saloon:** Venue hire £850 plus VAT  
(maximum 40 seated guests or 80 standing)

**Smoking Room:** Venue hire £550 plus VAT  
(maximum 22 seated guests)



# BRUNSWICK HOUSE

STEEPED IN GEORGIAN SPLENDOUR, A RELIC OF OLD LONDON

## BRUNSWICK HOUSE

HIRE EXCLUSIVELY  
OR BY THE FLOOR

### THE SALOON

THE SMOKING ROOM

THE PARLOUR/  
THE LIBRARY

THE STUDY

THE CELLAR ROOMS

TESTIMONIALS

# LASSCO



## THE SALOON AND TERRACE

An impressively shabby room of five bays with access to an outdoor roof terrace with two good chimneypieces and open fires. The green velvet curtains and full height windows enhance the elegant tone of the room, which is furnished with the characteristically quirky stock of LASSCO. Once the drawing room of The Duke of Brunswick and later the snooker room of the LSWR Scientific & Literary Institute, The Saloon adjoins to The Smoking Room.

### TO FIND OUT MORE

Please get in touch with  
Jo Auger on **0207 394 2100**  
or email [events@lassco.co.uk](mailto:events@lassco.co.uk)



# BRUNSWICK HOUSE

STEEPED IN GEORGIAN SPLENDOUR, A RELIC OF OLD LONDON

## BRUNSWICK HOUSE

HIRE EXCLUSIVELY  
OR BY THE FLOOR

### THE SALOON

THE SMOKING ROOM

THE PARLOUR/  
THE LIBRARY

THE STUDY

THE CELLAR ROOMS

TESTIMONIALS

LASSCO



0 1 5m  
0 1 10ft



# BRUNSWICK HOUSE

STEEPED IN GEORGIAN SPLENDOUR, A RELIC OF OLD LONDON

## BRUNSWICK HOUSE

HIRE EXCLUSIVELY  
OR BY THE FLOOR

THE SALOON

### THE SMOKING ROOM

THE PARLOUR/  
THE LIBRARY

THE STUDY

THE CELLAR ROOMS

TESTIMONIALS

# LASSCO



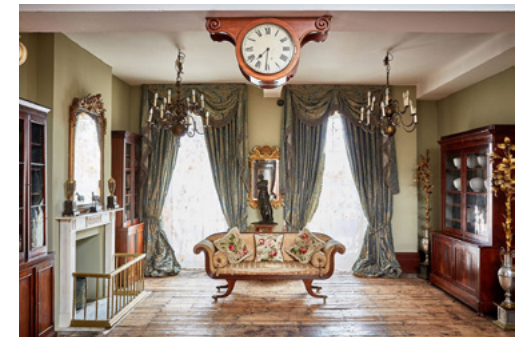
## THE SMOKING ROOM

A south facing first floor room of elegant proportions.

With open fire, glittering chandeliers and original, old floorboards connected by magnificent mahogany doors to the adjacent Saloon, once The Smoking Room of the Railwayman's Club and now a welcoming venue.

### TO FIND OUT MORE

Please get in touch with  
Jo Auger on **0207 394 2100**  
or email [events@lassco.co.uk](mailto:events@lassco.co.uk)



# BRUNSWICK HOUSE

STEEPED IN GEORGIAN SPLENDOUR, A RELIC OF OLD LONDON

## BRUNSWICK HOUSE

HIRE EXCLUSIVELY  
OR BY THE FLOOR

THE SALOON

### THE SMOKING ROOM

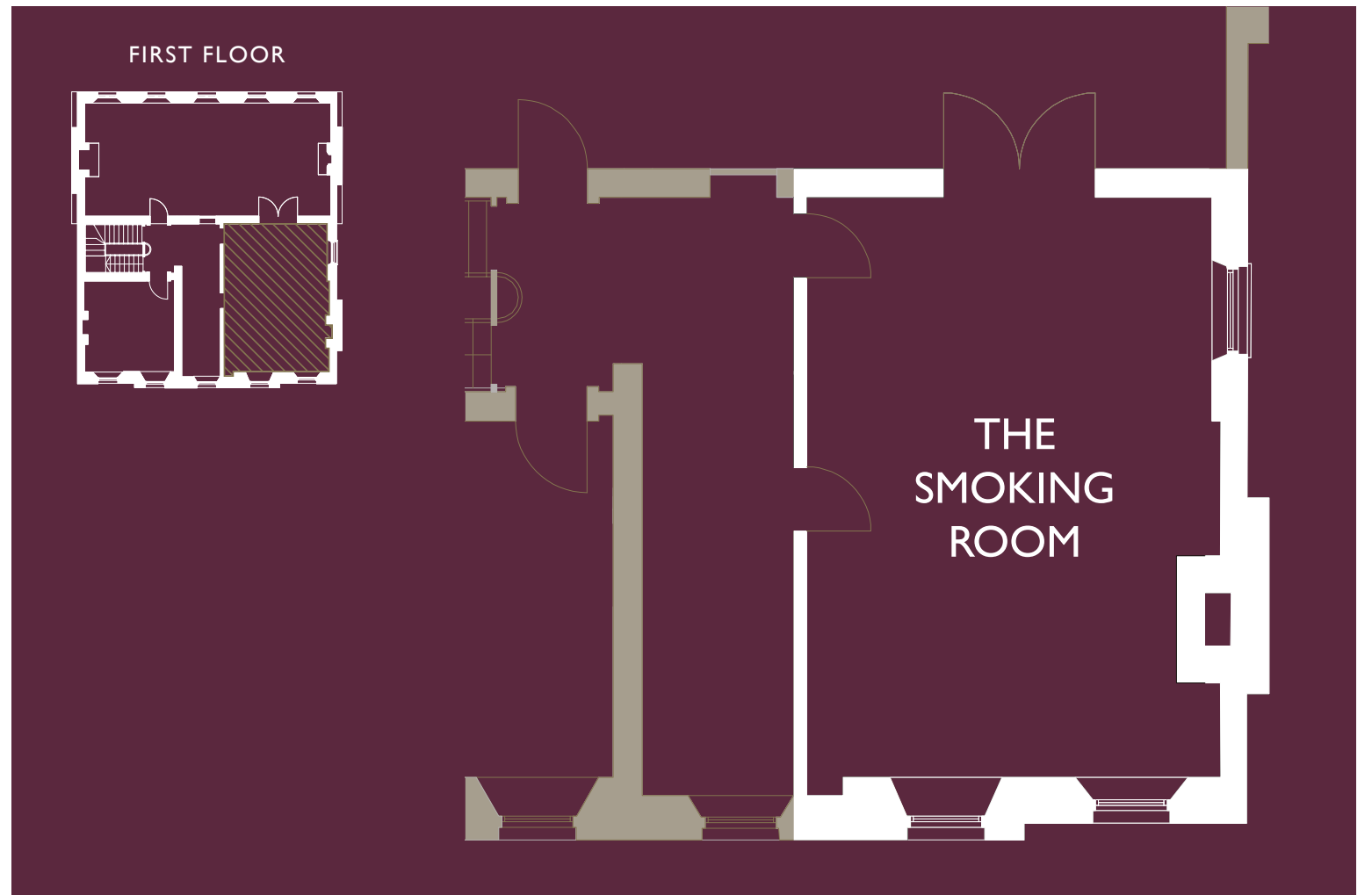
THE PARLOUR/  
THE LIBRARY

THE STUDY

THE CELLAR ROOMS

TESTIMONIALS

LASSCO



0 1 5m  
0 1 10ft



# BRUNSWICK HOUSE

STEEPED IN GEORGIAN SPLENDOUR, A RELIC OF OLD LONDON

## BRUNSWICK HOUSE

HIRE EXCLUSIVELY  
OR BY THE FLOOR

THE SALOON

THE SMOKING ROOM

**THE PARLOUR/  
THE LIBRARY**

THE STUDY

THE CELLAR ROOMS

TESTIMONIALS

LASSCO



## THE PARLOUR/ LIBRARY ROOM

A light, lofty and dignified room with a playful continental character; tall windows and noble chimneypiece and furnished accordingly.

A grand, salvaged doorcase accesses The Library, a fascinating room lined with tall display cabinets and book cases. A sparkling room abundant with hanging ceiling lights.

## TO FIND OUT MORE

Please get in touch with  
Jo Auger on **0207 394 2100**  
or email [events@lassco.co.uk](mailto:events@lassco.co.uk)



# BRUNSWICK HOUSE

STEEPED IN GEORGIAN SPLENDOUR, A RELIC OF OLD LONDON

## BRUNSWICK HOUSE

HIRE EXCLUSIVELY  
OR BY THE FLOOR

THE SALOON

THE SMOKING ROOM

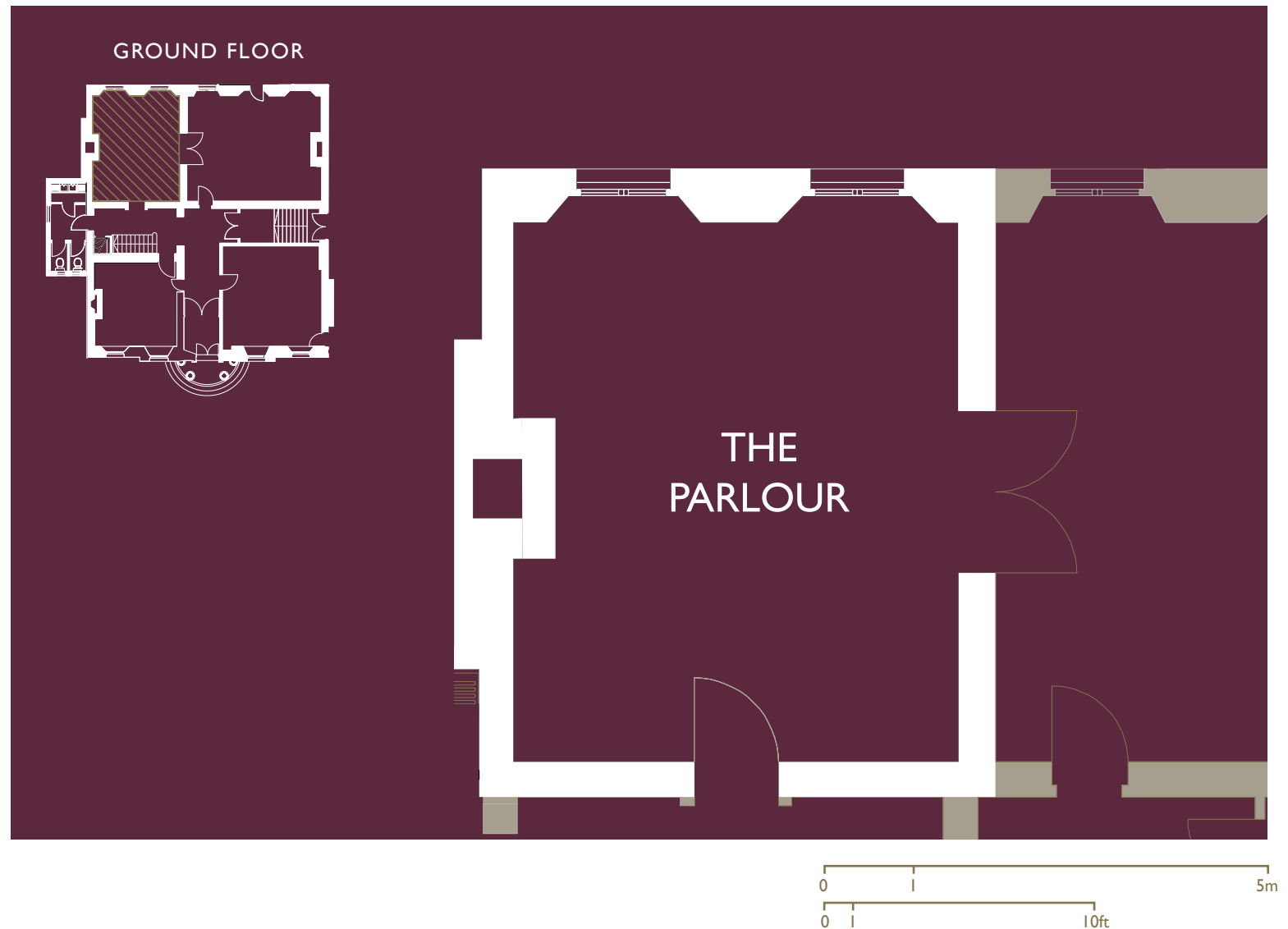
**THE PARLOUR/  
THE LIBRARY**

THE STUDY

THE CELLAR ROOMS

TESTIMONIALS

LASSCO



# BRUNSWICK HOUSE

STEEPED IN GEORGIAN SPLENDOUR, A RELIC OF OLD LONDON

## BRUNSWICK HOUSE

HIRE EXCLUSIVELY  
OR BY THE FLOOR

THE SALOON

THE SMOKING ROOM

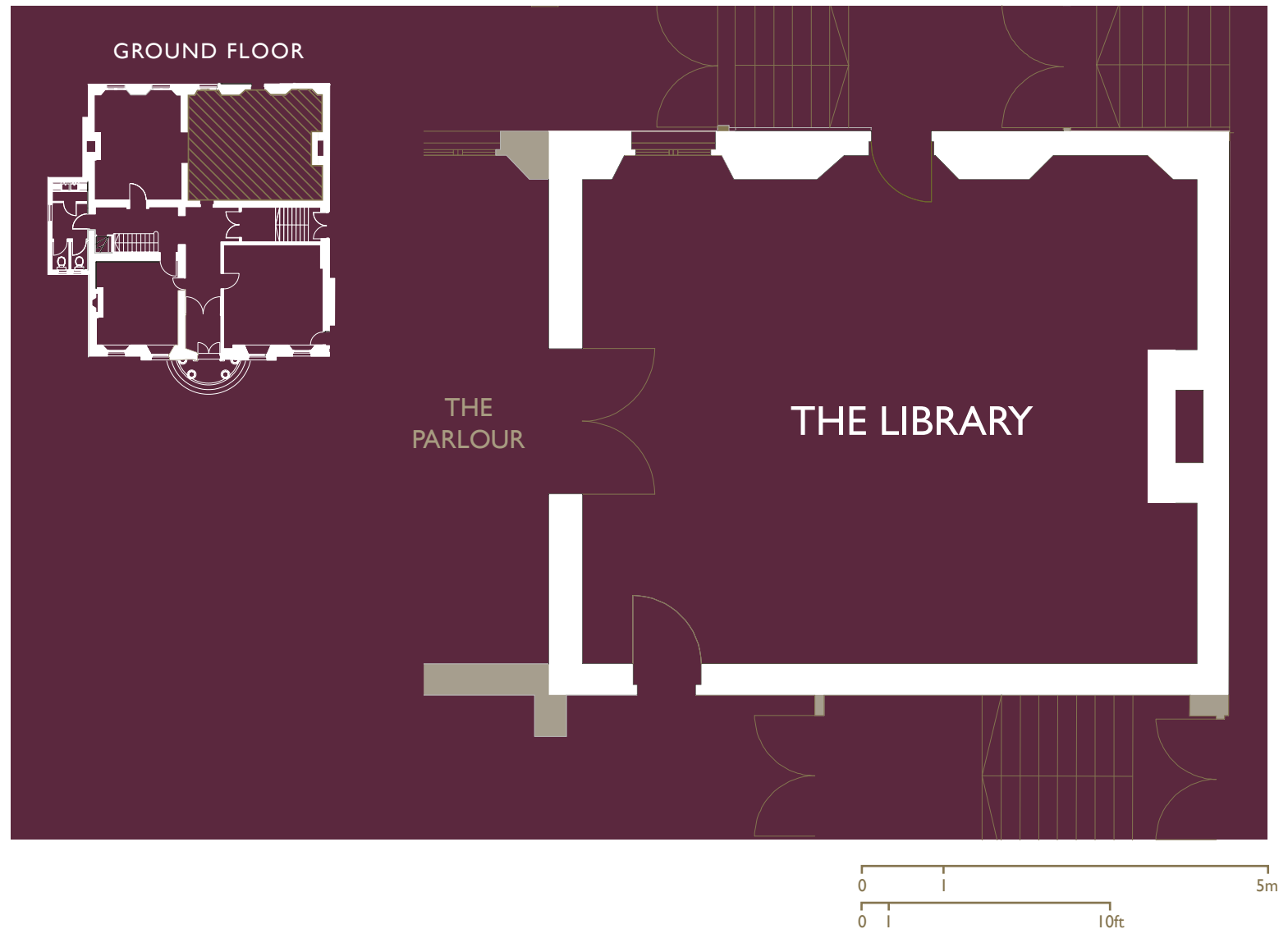
**THE PARLOUR/  
THE LIBRARY**

THE STUDY

THE CELLAR ROOMS

TESTIMONIALS

LASSCO





# BRUNSWICK HOUSE

STEEPED IN GEORGIAN SPLENDOUR, A RELIC OF OLD LONDON

## BRUNSWICK HOUSE

HIRE EXCLUSIVELY  
OR BY THE FLOOR

THE SALOON

THE SMOKING ROOM

THE PARLOUR/  
THE LIBRARY

**THE STUDY**

THE CELLAR ROOMS

TESTIMONIALS

# LASSCO



## THE STUDY

A lofty mid eighteenth century panelled room adorned by a superb chandelier and a splendid fireplace.

The Study is included in the ground floor hire.



## TO FIND OUT MORE

Please get in touch with  
Jo Auger on **0207 394 2100**  
or email [events@lassco.co.uk](mailto:events@lassco.co.uk)

# BRUNSWICK HOUSE

STEEPED IN GEORGIAN SPLENDOUR, A RELIC OF OLD LONDON

## BRUNSWICK HOUSE

HIRE EXCLUSIVELY  
OR BY THE FLOOR

THE SALOON

THE SMOKING ROOM

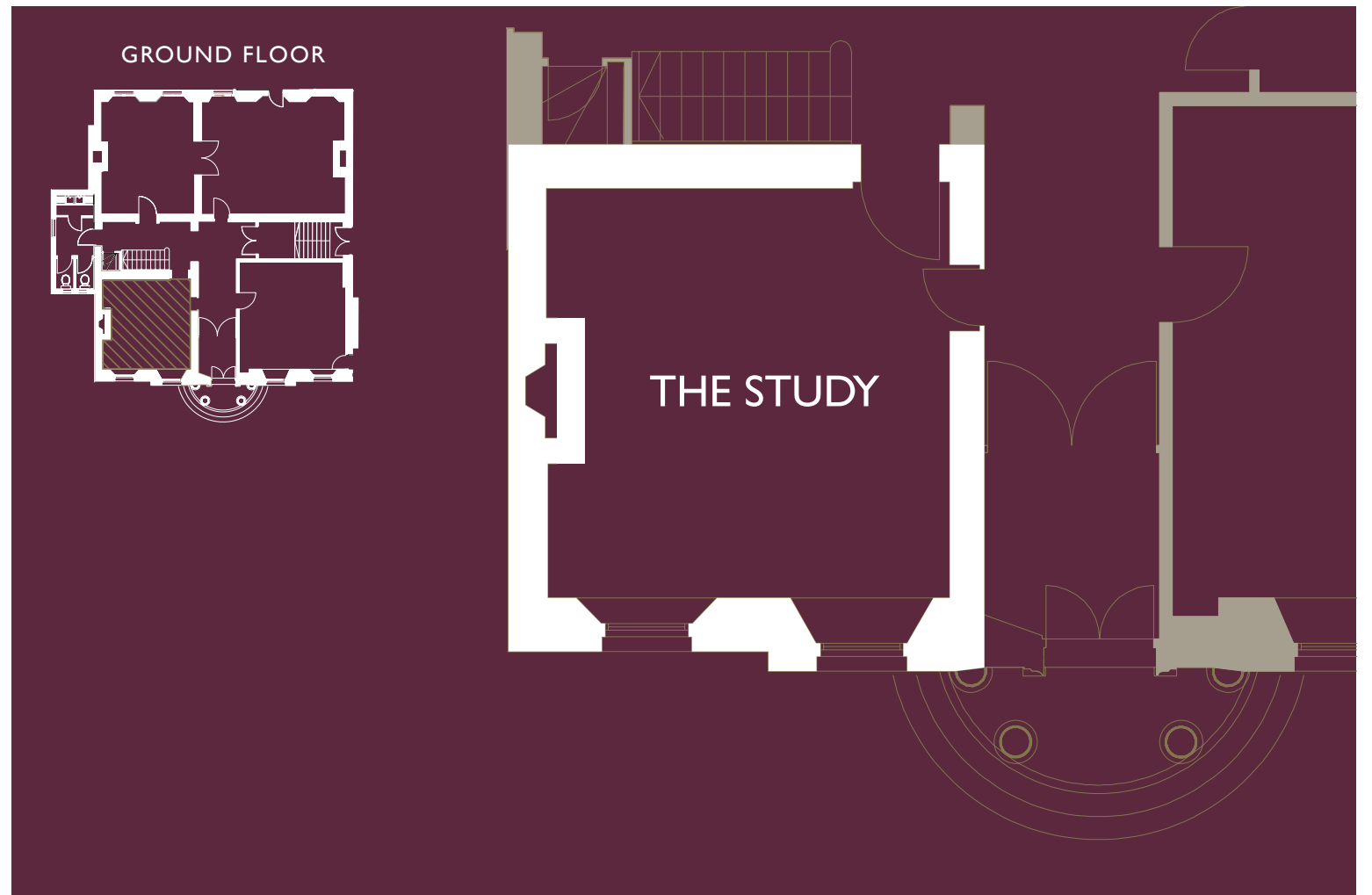
THE PARLOUR/  
THE LIBRARY

**THE STUDY**

THE CELLAR ROOMS

TESTIMONIALS

LASSCO



0 1 5m  
0 1 10ft

# BRUNSWICK HOUSE

STEEPED IN GEORGIAN SPLENDOUR, A RELIC OF OLD LONDON

## BRUNSWICK HOUSE

HIRE EXCLUSIVELY  
OR BY THE FLOOR

THE SALOON

THE SMOKING ROOM

THE PARLOUR/  
THE LIBRARY

THE STUDY

## THE CELLAR ROOMS

TESTIMONIALS

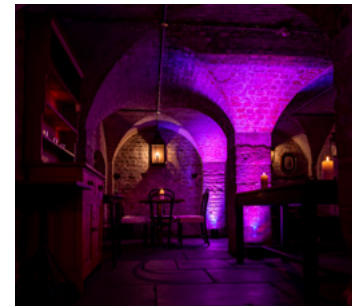
# LASSCO



## THE CELLAR ROOMS

Below the Georgian mansion are a series of cellars, wine vaults, sculleries and pantries with large fireplaces, ancient flagstones and venerable brickwork, incorporating the remains of an earlier 17th Century building – intimate and hugely atmospheric and so unexpected.

The hire of the Cellar Rooms includes the cellar bar, vaulted room and music room.



## TO FIND OUT MORE

Please get in touch with  
Jo Auger on **0207 394 2100**  
or email [events@lassco.co.uk](mailto:events@lassco.co.uk)



# BRUNSWICK HOUSE

STEEPED IN GEORGIAN SPLENDOUR, A RELIC OF OLD LONDON

## BRUNSWICK HOUSE

HIRE EXCLUSIVELY  
OR BY THE FLOOR

THE SALOON

THE SMOKING ROOM

THE PARLOUR/  
THE LIBRARY

THE STUDY

THE CELLAR ROOMS

## TESTIMONIALS

## TESTIMONIALS

"Just back from our honeymoon and taking a moment to write you all at Brunswick House a note to thank you for your help. Our reception was without a doubt perfect from all of our guest's perspectives, and most especially OURS! The rooms were beautifully arranged, the mood was just what we wanted, the food was praised all night long, the girls who helped us along with Jo all night were so lovely and friendly, the table set-up looked great, and we could go on and on... We were even cheered by the patrons of the bar downstairs before leaving. So funny! Thank you for making our day just the way we hoped it would be."

**John (wedding reception)**

"Thank you for an absolutely FANTASTIC evening on Saturday. Every single person was blown away by the food, the beautiful rooms, the overall atmosphere and the service! It could not have gone any better – it was perfect!"

**Bruce and Lea (engagement party)**

"I just wanted to say a huge thank you for everything last night. The party was a great success and EVERYONE commented on how fabulous the venue was. We have already had at least five requests to hold it there again next year so you'll be hearing from us again!"

**Eve (book launch)**

"Thank you for such a delightful, delightful evening at Brunswick House. There was such a palpable sense of occasion and fun, the food was world-class and the wine ever-flowing. The service and pace was friendly, convivial, and delightful in every way – I have rarely looked down a table to see so many people chatting away at such a rate

**John (birthday party)**

"Just wanted to say how helpful everyone was pre our Christmas party when I came up to lassco, it was a fantastic evening and everything about the place was great, so thank you and all the staff."

**Giulia (Christmas party)**

"We honestly couldn't have dreamed of a more perfect day. Brunswick House looked absolutely beautiful so thank you for bringing my vision to life, and both the food and service on the night was second to none. We would recommend Brunswick to anyone who asks – it's always going to be a really special place to us."

**Robyn & Rob (wedding reception)**

"You all did us proud. The venue was amazing, the food was awesome and the service was seamless. Everyone had a brilliant time. We enjoyed ourselves too, so much so that we will be back!"

**Angela & Patrick (birthday party)**

"Just a quick note to thank you for your kind, efficient, intelligent and cordial help organising the birthday. The night itself was terrific. All guests were amazed and charmed. Sometimes you get the venue, sometimes you get the food, sometimes you get the staff, but it is very, very hard to get all three!"

**Ed (birthday party)**

# LASSCO

# BRUNSWICK HOUSE

STEEPED IN GEORGIAN SPLENDOUR, A RELIC OF OLD LONDON

## BRUNSWICK HOUSE

HIRE EXCLUSIVELY  
OR BY THE FLOOR

THE SALOON

THE SMOKING ROOM

THE PARLOUR/  
THE LIBRARY

THE STUDY

THE CELLAR ROOMS

TESTIMONIALS

# LASSCO



## LOCATION

30 Wandsworth Road, Vauxhall,  
London SW8 2LG, United Kingdom

Contact Jo Auger on **+44 (0)207 394 2100**  
or email **events@lassco.co.uk**

## HOW TO GET HERE

LASSCO Brunswick House is in Central London next to Vauxhall Bridge – close to Westminster, the West End and routes to the South West.

**By Cab:** We're on the corner of Wandsworth Road and Nine Elms Lane, opposite the Vauxhall Bus Station. All "Black Cabs" should know us, get them to drop you in a safe spot – it is a busy junction.

**By Road:** Head for Vauxhall Bridge. The best approach is from Nine Elms Lane. Closest parking is at St George's Wharf underground car park.

**By Tube:** LASSCO Brunswick House is a two-minute walk from Vauxhall Tube Station. Vauxhall is just minutes from all central London tube stops on the Victoria Line. It is in Zone 1. On arrival, follow signs to Exit 4. LASSCO Brunswick House is straight on from the exit on your right.

**By Riverboat:** From the Tate Britain riverboat pier walk south to Vauxhall Bridge, cross the river and follow the pavement leaving the St. George Wharf development to your right. Brunswick House is on the right.

**By foot:** The Thames path runs past the front door of Brunswick House and we are on the Central London cycle routes.